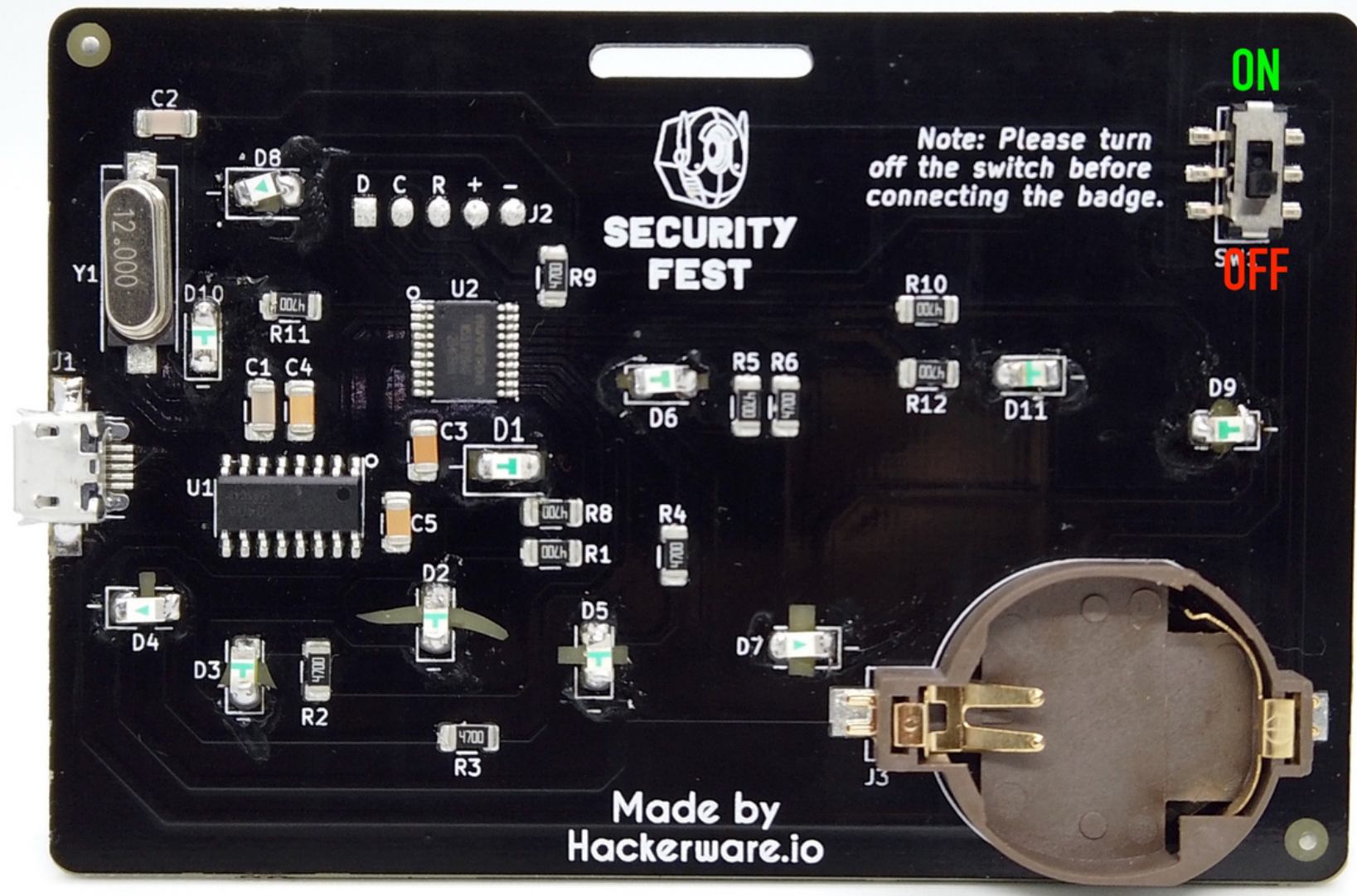




THE GOTHENBURG CYBERPUNK CTF BADGE

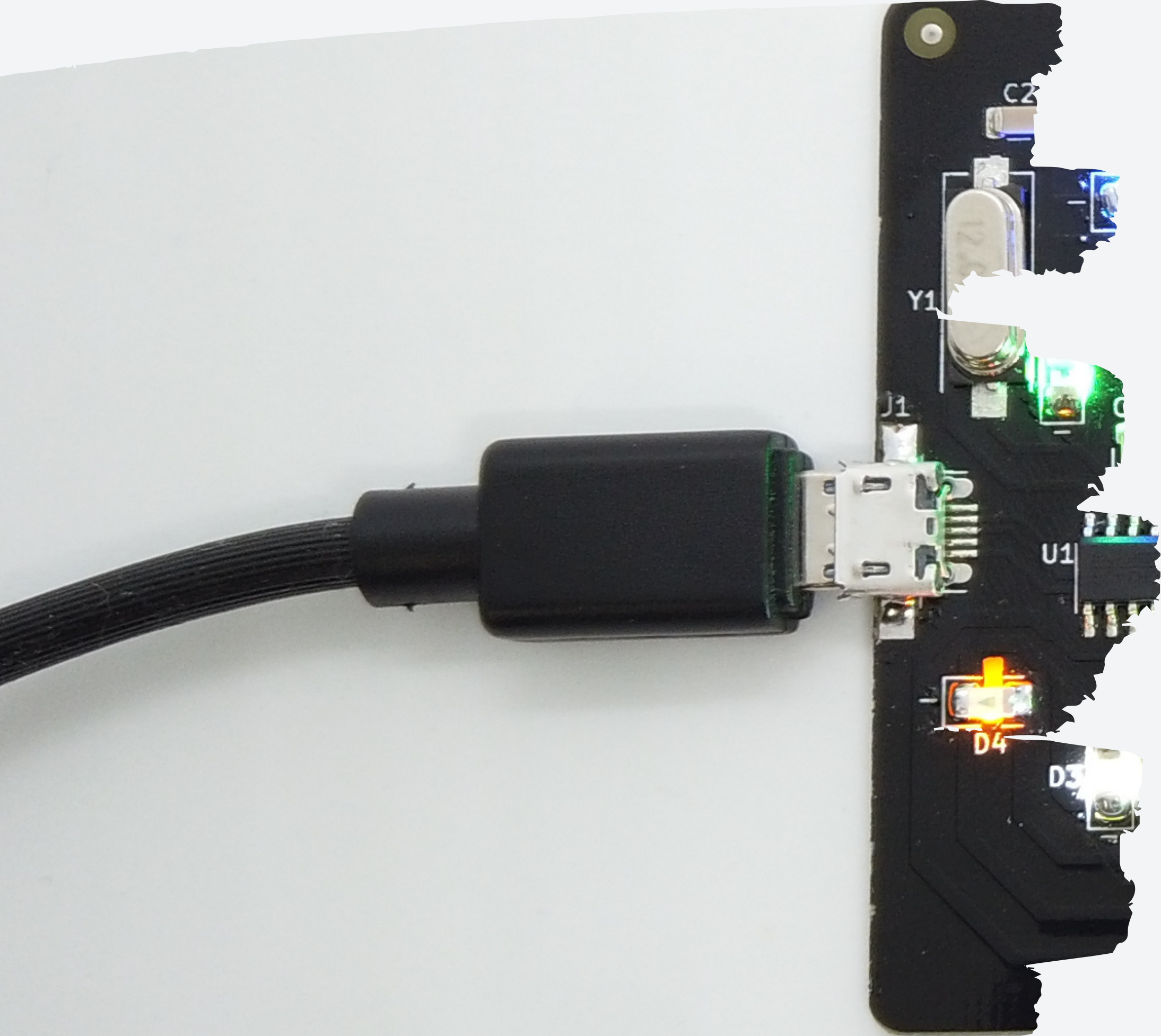
**CTF Interfacing**



## TURN OFF THE BADGE

---

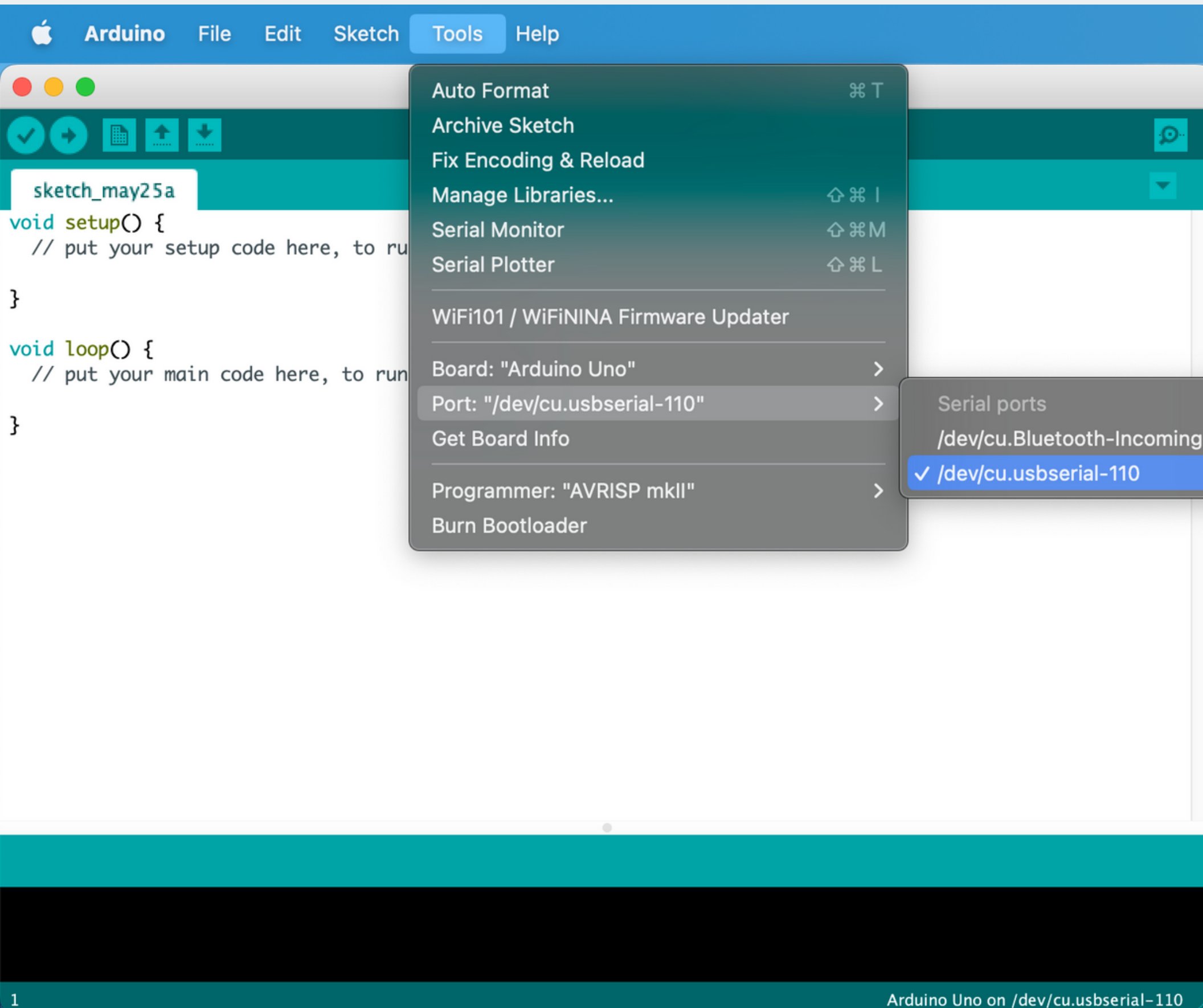
Before connecting the micro-USB cable, please turn OFF the badge.



## CONNECT TO SYSTEM

---

Plug in the micro-USB cable and connect the badge to your system.



## SELECT THE RIGHT PORT

---

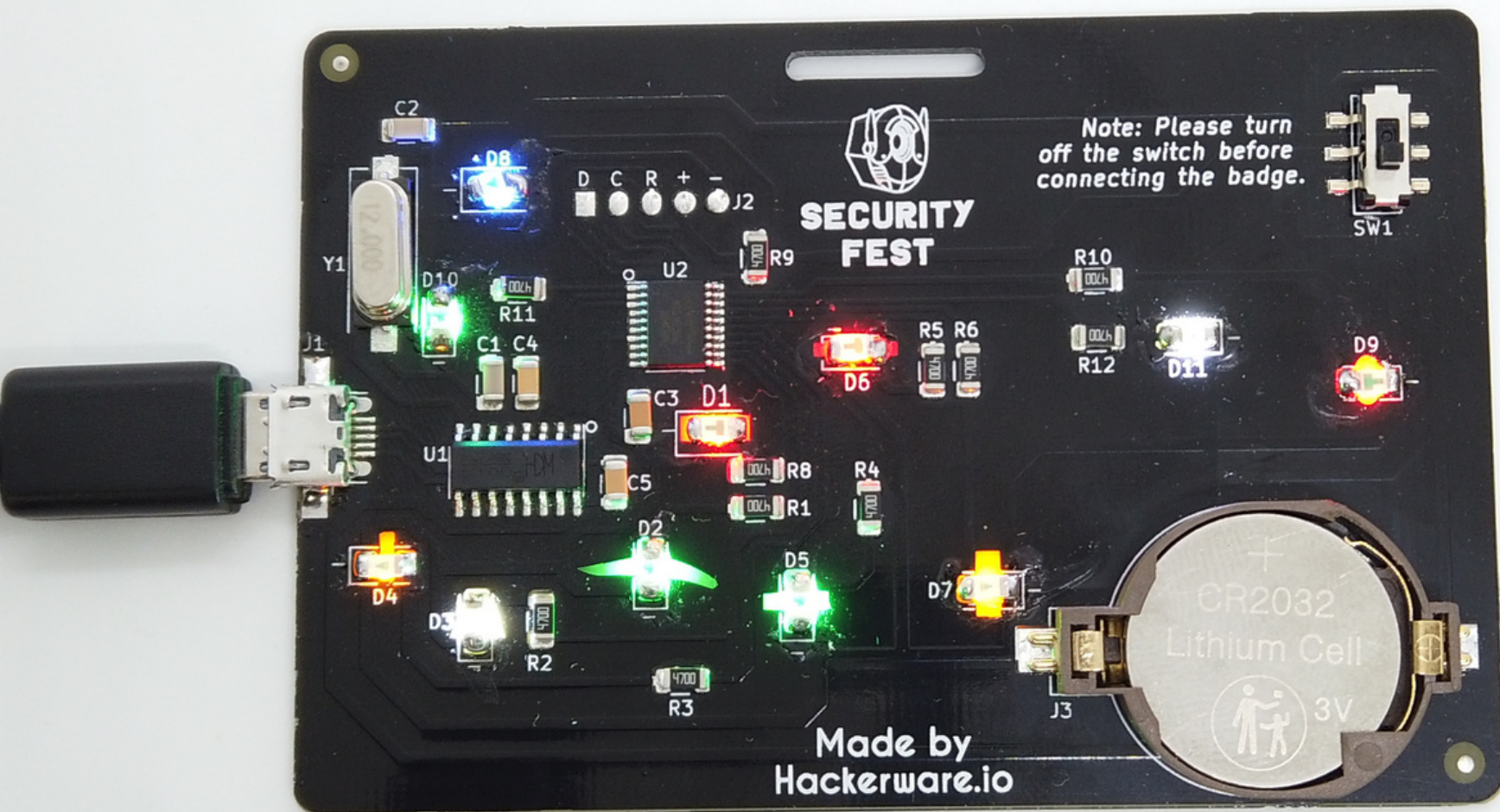
Open the Serial Monitor software of your choice.

For ease of use, Arduino IDE can be preferred.

Download Arduino IDE from [www.Arduino.cc](http://www.Arduino.cc)

From the Tools menu, select the port where the badge is connected.





# PLAY THE CTF

---

Each correct flag unlocks a LED.

To reset the badge, send RESET. And reconnect the badge.

Solve all the challenges to glow the badge to its fullest and gain bragging rights and prizes!